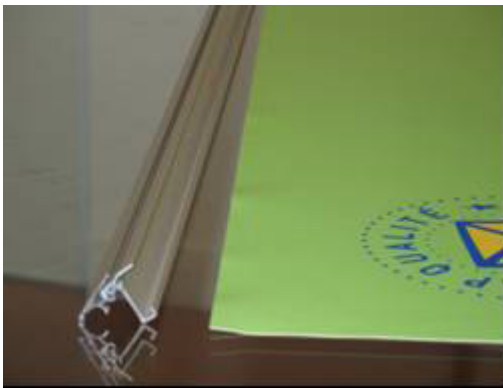


## Graphic setup instructions for the clipping hangers and kickers

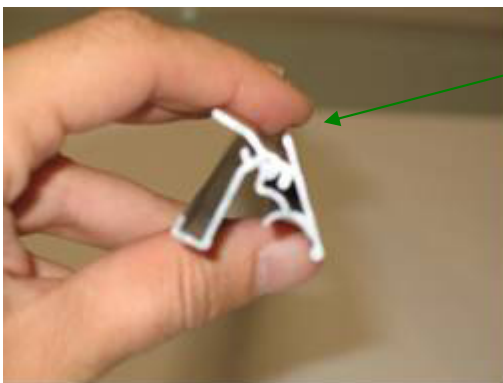
Setup needs to be done on a clean surface  
The hanger and the kicker are the same for the duo.starter.  
For the duo.sprint, the kicker has got a rubber flab.

### Step 1: Position the graphic and the clipping hanger

Unfold the graphic with the printed part facing up



The hanger must be open just like the picture below and placed next to the top of the graphic (See above).



**Insert the graphic here (it won't work on the other side)**

## Step 2: Insert the graphic in the hanger

Slide the graphic in.



Insert the graphic all the way down alongside the hanger.



Close the hanger by pushing on both ends on the opposite side of the graphic.



## Step 3: Start over with the kicker

For the duo.sprint, make sure the kicker has got the rubber flab.